

Flensedeler

1. Generell informasjon

Produsent: Ludwig FRISCHUT GmbH und Co.

Materiale: GGG-400, EN GJS-400-18, EN 1563

Trykk klasse: PN 10 (standard) PN 16 (På forespørsel)

Flenseboring: PN 10/16 i henhold til 1092 (ISO 7005-2).

PN 16 Fra og med DN 200 < På forespørsel).

Overflatebehandling: Epoxy, GSK-godkjent opp til DN 300. EWS minimum 250µ. EN 14901 (DIN 30677-2)

Montering: Skal kun monteres av godkjent montør.

Vedlikeholdsinstruks: Ingen driftsmessige tiltak nødvendig.

Transport/Lagring: Normal leveranse.

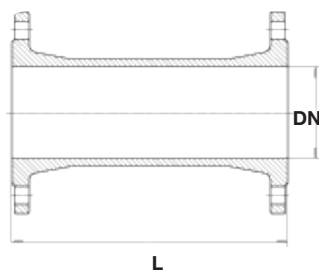
Bruksområde/Spesielle egenskaper: Flensedeler for forsyningsvann.

Medium: Beregnet for forsynings-drikkevann opp til 40°C - Andre medier på forespørsel.

2. NRF nummer og dimensjoner

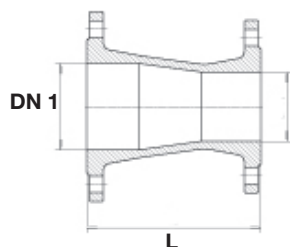
Flenserør, PN 10

NRF nr	DN	PN	Lengde	Vekt	NRF nr	DN	PN	Lengde	Vekt
2153503	50	10	100	6,5	2153533	150	10	200	16,5
2153504	50	10	300	9,0	2153534	150	10	250	20,0
2153505	65	10	100	8,0	2153535	150	10	300	19,7
2153506	65	10	300	8,8	2153536	150	10	400	23,0
2153507	80	10	100	7,0	2153537	150	10	500	26,0
2153508	80	10	300	11,0	2153538	150	10	600	29,5
2153509	80	10	400	12,0	2153539	150	10	800	36,0
2153511	80	10	500	14,1	2153541	150	10	1000	42,5
2153512	80	10	800	19,0	2153542	200	10	100	18,4
2153513	80	10	1000	22,0	2153543	200	10	200	23,0
2153514	100	10	100	8,6	2153544	200	10	250	25,0
2153515	100	10	200	10,7	2153545	200	10	300	27,5
2153516	100	10	250	11,0	2153546	200	10	400	32,5
2153517	100	10	300	12,7	2153547	200	10	500	35,0
2153518	100	10	400	14,8	2153548	200	10	600	41,5
2153519	100	10	500	16,8	2153549	200	10	800	50,5
2153521	100	10	600	18,8	2153551	200	10	1000	60,0
2153522	100	10	800	23,0	2153552	250	10	200	35,0
2153523	100	10	1000	27,0	2153553	250	10	300	38,0
2153524	125	10	100	10,6	2153554	250	10	400	44,0
2153525	125	10	200	13,3	2153555	250	10	500	50,5
2153526	125	10	300	15,9	2153556	250	10	600	56,5
2153527	125	10	400	18,5	2153557	250	10	800	68,5
2153528	125	10	500	21,0	2153558	250	10	1000	81,0
2153529	125	10	800	29,0	2153559	300	10	200	43,0
2153531	125	10	1000	34,5	2153561	300	10	300	49,5
2153532	150	10	100	13,2	2153562	300	10	400	57,0



Flensedeler

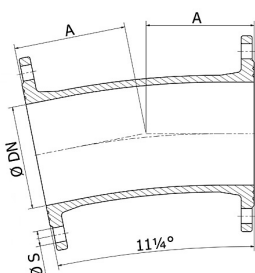
Flenseovergang, PN10



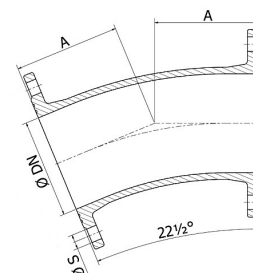
NRF nr	DN1	DN2	PN	Lengde	Vekt
2153472	65	50	10	200	6,8
2153473	80	50	10	200	7,5
2153474	80	65	10	200	8,2
2153475	100	50	10	200	8,1
2153476	100	65	10	200	8,8
2153477	100	80	10	200	9,5
2153479	125	80	10	200	10,7
2153481	125	100	10	200	11,4
2153482	150	80	10	200	12,2
2153483	150	100	10	200	12,8
2153484	150	125	10	200	14,1
2153485	200	80	10	200	18,1

NRF nr	DN1	DN2	PN	Lengde	Vekt
2153486	200	100	10	300	20,5
2153487	200	125	10	300	18,9
2153488	200	150	10	300	22,0
2153489	250	100	10	300	22,0
2153491	250	125	10	300	23,0
2153492	250	150	10	300	24,0
2153493	250	200	10	300	30,5
2153494	300	100	10	300	33,0
2153495	300	150	10	300	37,0
2153496	300	200	10	300	39,0
2153497	300	250	10	300	41,0

Flensebend 11°



Flensebend 22°

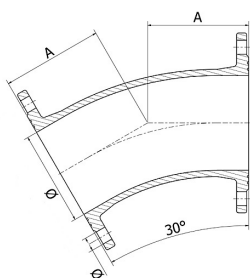


NRF nr	DN	PN	b (mm)	Vekt
2153433	80	10/16	130	9,8
2153434	100	10/16	140	11,9
2153435	125	10/16	150	16,0
2153436	150	10/16	160	19,7
2153437	200	10	180	32,5
2153438	250	10	210	45,0
2153439	300	10	255	63,0

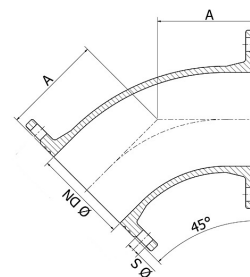
NRF nr	DN	PN	b (mm)	Vekt
2153441	80	10/16	130	17,0
2153442	100	10/16	140	11,9
2153443	125	10/16	150	15,6
2153444	150	10/16	160	19,7
2153445	200	10	180	33,5
2153446	250	10	210	45,0
2153447	300	10	255	63,0

Flensedeler

Flensebend 30°



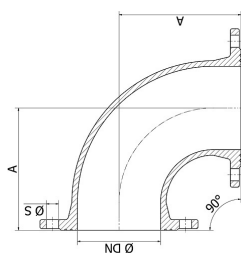
Flensebend 45°



NRF nr	DN	PN	b (mm)	Vekt
2153448	80	10/16	130	9,5
2153449	100	10/16	140	11,9
2153451	125	10/16	150	11,1
2153452	150	10/16	160	19,6
2153453	200	10	180	28,6
2153454	250	10	210	45,0
2153455	300	10	255	63,0

NRF nr	DN	PN	b (mm)	Vekt
2153456	80	10/10	130	9,5
2153457	100	10/10	140	11,4
2153458	125	10/10	150	14,6
2153459	150	10/10	160	18,7
2153461	200	10	180	27,5
2153462	250	10	350	80,0
2153463	300	10	400	112,0

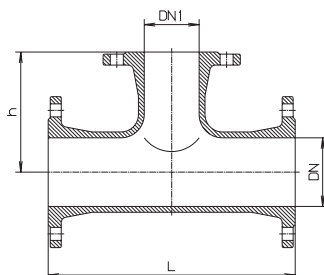
Flensebend 90°



NRF nr	DN	PN	b (mm)	Vekt
2153464	80	10/10	165	9,9
2153465	100	10/10	180	11,9
2153466	125	10/10	200	15,6
2153467	150	10/10	220	20,5
2153468	200	10	260	31,0
2153469	250	10	350	50,0
2153471	300	10	400	75,0

Flensedeler

Flense T-rør



NRF nr	PN	DN	DN1	L (mm)	H (mm)	Vekt
2153361	10	65	50	330	157	15,50
2153362	10	65	65	330	165	16,50
2153363	10	80	50	330	160	16,50
2153364	10	80	65	330	165	14,70
2153365	10	80	80	330	165	16,00
2153366	10	100	50	360	170	16,60
2153367	10	100	65	360	170	17,40
2153368	10	100	80	360	180	18,60
2153369	10	100	100	360	180	20,50
2153371	10	125	50	400	185	21,50
2153372	10	125	65	450	195	31,00
2153373	10	125	80	400	190	23,00
2153374	10	125	100	400	195	24,00
2153375	10	125	125	400	200	25,50
2153376	10	150	50	440	200	27,50
2153378	10	150	80	440	205	29,0
2153379	10	150	100	440	210	29,5
2153381	10	150	125	440	215	31,0
2153382	10	150	150	440	220	33,8
2153383	10	200	80	520	235	42,5
2153384	10	200	100	520	240	43,0
2153385	10	200	125	520	245	45,0
2153386	10	200	150	520	250	50,0
2153387	10	200	200	520	260	53,0
2153388	10	250	80	700	270	71,0
2153389	10	250	100	700	275	75,0
2153391	10	250	125	700	285	93,0
2153392	10	250	150	700	300	81,0
2153393	10	250	200	700	325	76,5
2153394	10	250	250	700	350	83,0
2153395	10	300	80	800	290	92,0
2153396	10	300	100	800	300	94,0
2153397	10	300	125	800	312	126,0
2153398	10	300	150	800	325	101,0
2153399	10	300	200	800	350	102,0
2153401	10	300	250	800	375	112,0
2153402	10	300	300	800	400	127,0

Flensedeler

Flensekryss med brannavstikk, PN10



NRF nr	PN	DN	DN2	L (mm)	H (mm)	Vekt
2153423	10	100	100	360	180	30,0
2153424	10	150	100	440	210	40,00
2153425	10	150	150	440	220	50,0
2153426	10	200	100	520	240	63,0
2153427	10	200	150	520	250	63,0
2153428	10	200	200	520	260	73,0
2153429	10	250	250	700	350	112,0
2153431	10	300	300	800	400	155,0
2153432	10	400	400	900	450	262,0

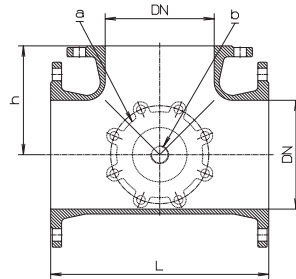
Flense t-rør med brannavstikk, PN10



NRF nr	DN	DN2	L (mm)	H (mm)	Vekt
2153403	100	100	360	180	26,00
2153404	150	100	440	210	38,00
2153405	150	150	440	220	40,00
2153406	200	199	520	240	49,00
2153407	200	150	520	250	53,00
2153408	200	200	520	260	58,00
2153409	250	250	700	350	83,00
2153411	300	300	800	400	125,00
2153412	400	400	800	400	199,00

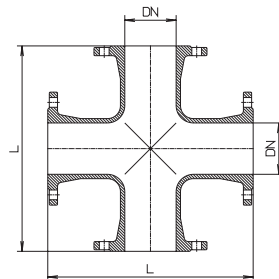
Flensedeler

Kort flense T-rør med brannavstikk, PN10



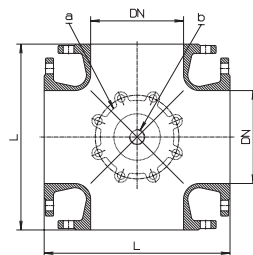
NRF nr	DN	Vent. uttak	L (mm)	Vekt
5508372	200	100	400	60,0
5508374	250	100	460	91,0
5508376	300	100	520	112,0

Flensekryss, PN 10



NRF nr	DN	DN2	L (mm)	Vekt
2153413	100	100	360	26,0
2153414	125	125	400	39,0
2153416	150	150	440	42,0
2153419	200	200	520	64,5
2153421	250	250	700	135,0
2153422	300	300	800	185,0

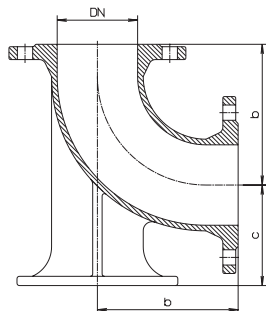
Kort flensekryss med brannavstikk, PN10



NRF nr	DN	Vent. uttak	L (mm)	Vekt
5508382	200	100	400	60,0
5508384	250	100	460	91,0
5508386	300	100	520	112,0

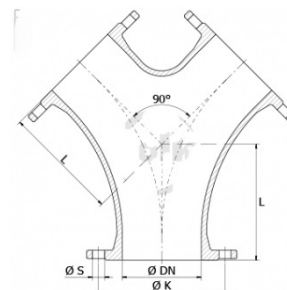
Flensedeler

Fotbend



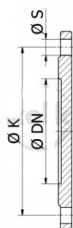
NRF nr	DN	Vekt
2104734	80	13,40
2104735	100	16,80
2104736	150	29,50

Y-stykke



Artikkel	DN	L	Vekt
Y-stykke	80	80	22,0
Y-stykke	100	100	27,0
Y-stykke	150	150	40,0

Blindflens



NRF nr	PN	DN	L (mm)	Vekt (Kg)
2153301	10	40	160	1,9
2153303	10	50	165	2,9
2153306	10	60	185	3,8
2153309	10	80	200	4,0
2153316	10	100	220	4,6
2153324	10	125	250	6,0
2153326	10	150	285	7,4
2153334	10	200	340	11,0

NRF nr	PN	DN	L (mm)	Vekt (Kg)
2153341	10	250	400	17,2
2153347	10	300	455	23,5
2153354	10	400	580	46,0
2153356	10	500	715	62,0
2153358	10	600	840	95,0

Flensedeler

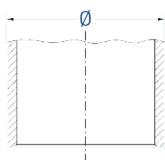
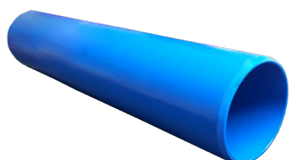
Blindflens med gjenget uttak



NRF nr	PN	DN	Gjenger	Vekt (Kg)
2153302	10	40	2"	1,4
2153304	10	50	1"	2,6
2153305	10	50	2"	2,5
2153307	10	60	1"	0,0
2153308	10	60	2"	3,4
2153311	10	80	1"	4,0
2153312	10	80	1 1/4"	4,0
2153313	10	80	1 1/2"	4,0
2153314	10	80	2"	3,6
2153315	10	80	2 1/2"	4,0
2153317	10	100	1"	4,5
2153318	10	100	1 1/4"	4,5
2153319	10	100	1 1/2"	4,5
2153321	10	100	2"	4,3
2153322	10	100	2 1/2"	4,2
2153323	10	100	3"	4,2
2153325	10	125	2"	5,6
2153327	10	150	1"	7,0
2153328	10	150	1 1/4"	7,0
2153329	10	150	1 1/2"	7,0
2153331	10	150	2"	9,1

NRF nr	PN	DN	Gjenger	Vekt (Kg)
2153332	10	150	2 1/2"	7,2
2153333	10	150	3"	7,3
2153335	10	200	1"	12,5
2153336	10	200	1 1/4"	12,3
2153337	10	200	1 1/2"	12,4
2153338	10	200	2"	12,0
2153339	10	200	2 1/2"	11,0
2153342	10	250	1"	17,0
2153343	10	250	1 1/4"	16,6
2153344	10	250	1 1/2"	16,8
2153345	10	250	2"	16,4
2153346	10	250	2 1/2"	16,2
2153348	10	300	1"	25,7
2153349	10	300	1 1/4"	25,4
2153351	10	300	1 1/2"	25,6
2153352	10	300	2"	25,3
2153353	10	300	2 1/2"	25,1
2153355	10	400	2"	45,0
2153357	10	500	2"	61,0
2153359	10	600	2"	94,0

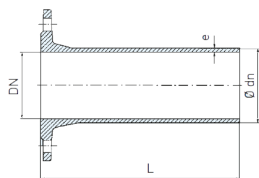
Kalibrert spissrør



NRF nr	PN	DN	Lengde	Vekt
2153801	10	100	800	18,50
2153802	10	150	800	29,30
2153803	10	200	800	41,10
2153804	10	250	800	55,30
2153805	10	300	800	73,90

Flensedeler

Flensespiss for Tyton



NRF nr	DN	Ø dn	e	Vekt	PN
2153578	80	98	7,0	7,8	10/16
2153579	100	118	7,2	9,7	10/16
2153581	150	170	7,8	16,3	10/16
2153582	200	222	8,4	25,3	10
2153583	250	274	9,0	35,3	10
2153584	300	326	9,6	53,7	10